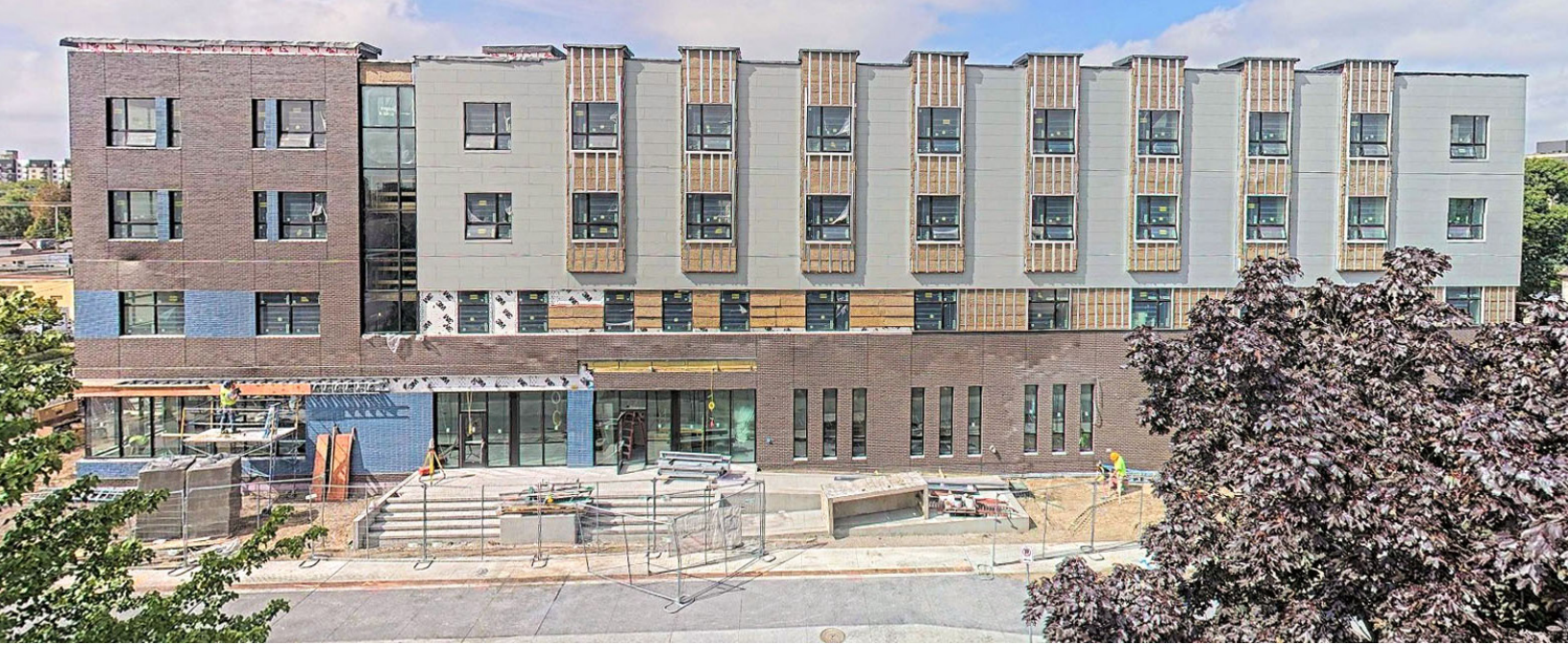




# ANNUAL REPORT

2024 | 2025



## CONTENTS

- 3** Year in Review
- 4** Anti-Racism Commitment
- 5** Homestretch Campaign
- 6** Programs & Outcomes
- 7** Art 4 Shelter
- 8** Sponsor Thank You
- 9** Homeless Memorial March & Service
- 10** Volunteer Update
- 11** Financials: Fiscal Year Ending June 30, 2025
- 12** Financials: Fiscal Year Ending June 30, 2024
- 13** Financials: Fiscal Year Ending June 30, 2023
- 14** About Simpson Housing Services

# A MISSION AND VALUES UPDATE

*Simpson updated its two-decade-old mission—along with its values—to better reflect its operational focus, development and approach to programs, and steadfast commitment to anti-racist efforts, both internally and within the broader community.*

*A diverse group of Simpson staff worked collaboratively and presented them to the agency’s staff, leadership, and board, and revised the language based on feedback. The working group brought diverse experiences, perspectives, and thoughtful consideration to the table. Updates also moved Simpson’s logo to one color, and a colorful swoosh was added to the brand palette.*



## MISSION

**To house, support, and empower people impacted by homelessness.**

## VALUES

We believe that everybody has the right to safe and affordable housing.

Racism is a key cause of homelessness; therefore, we work to dismantle racism on individual, organizational, and systemic levels.

We honor the inherent strengths and dignity of each person and promote the power of self-determination.

We are driven by compassion and accountability as we build authentic relationships to strengthen our community.

**1,660 individuals** supported in shelter and housing programs.

**703 households** placed into housing

**92% of families** maintained safe, stable housing

# ANTI-RACISM COMMITMENT



Minnesota, despite its deep resources, struggles with extreme racial disparities in education, employment, and housing. We are grateful to all organizations working toward equity and advocacy in our community.

At Simpson, we understand that racism is a key cause of homelessness, affecting the vast majority of housing participants and shelter guests, who are disproportionately people of color (BIPOC) due to systemic injustices. We believe that meaningful change only comes from confronting these difficult truths.

We are humbled and grateful to do this work in community with the many organizations advocating for and working toward equity in Minnesota.

**Simpson Housing Services  
received the Nonprofit Mission  
Award for Anti-Racism Initiative  
from the Minnesota Council of  
Nonprofits in October 2024.**





**SIMPSON COMMUNITY  
SHELTER & APARTMENTS**  
2740 1<sup>st</sup> Avenue S., Minneapolis

**72** shelter beds

**On-site  
HEALTH CARE CLINIC**

**42** permanent supportive homes

# A model for more

Simpson Community Shelter & Apartments is a low-barrier facility intentionally designed to meet the short-term housing needs of people impacted by homelessness. The new site combines shelter, housing, and supportive services under one roof.

**THE BUILDING INCLUDES:**

- > Trauma-informed designed
- > Accessible and adaptable spaces and sleeping areas
- > A health clinic run by Hennepin Health Care for the Homeless
- > Operating 24 hours 7 days a week with a 24-hour front desk
- > Accommodations for service partners
- > Commercial kitchen and dining room
- > Space for volunteer groups to cook and serve daily meals
- > Solar panels and geothermal HVAC system
- > Green space and balconies



**Homestretch  
Campaign**



→  
**Donate today**

[simpsonhousing.org](http://simpsonhousing.org)  
[development@simpsonhousing.org](mailto:development@simpsonhousing.org)

## **326 INDIVIDUALS**

served through the extended-stay shelter

Average age of guests was

**43 YEARS OLD**

## **3% OF SHELTER GUESTS**

were 62 or older

## **83% OF SHELTER GUESTS**

were BIPOC

**69% OF ADULTS** had mental health challenges and/or chemical dependency.

**27% OF ADULTS** had a physical disability

**91 GUESTS** moved into housing from shelter

Staff partnered with

**308 FAMILIES** and supported **591 CHILDREN**

## **61% OF CHILDREN AND YOUNG PEOPLE**

in Family Housing were supported in our programs

Average age of parents was

**35 YEARS OLD**

## **41 YOUTH PARTICIPANTS**

were housed

## **96% OF HOUSEHOLDS**

were at or below 100% of the poverty line at intake

## **87% OF FAMILIES**

maintained safe, stable housing this year

**90% OF HOUSEHOLDS** in all supportive housing programs achieved a self-defined goal

# PROGRAMS & OUTCOMES

Simpson's priority is to ensure people achieve long-term stability via several key programs:

## **EXTENDED-STAY SHELTER**

We provide a safe, dignified, extended-stay shelter to 64 people (female, male, and non-binary) at a time. The shelter operates 24 hours a day. The staff meet with guests to resolve housing barriers and connect guests to resources that support ongoing stability, including housing assistance, veterans' services, and health-related services, along with access to three daily meals, showers, laundry, toiletries, mail, and a savings program.

Volunteer groups serve healthy, filling meals for lunch and dinner. Shelter guests have the chance to visit with staff, volunteers, and other guests, or just unwind by playing board games or watching TV.

## **SUPPORTIVE HOUSING**

Our Family Housing Program is the largest program we provide, supporting more than 600 households annually (average household length of stay is 27.5 months).

Programming is provided to single adults, youth (ages 16-24), and families. The staff works to secure housing and forge ongoing relationships that foster people's strengths and support attaining individualized goals.

Individualized support services are focused on setting and working toward the participant's personal goals and often include financial literacy, positive parenting, education, mentorship, and employment.

## **CHILDREN AND YOUTH SERVICES (CYS)**

To end the generational cycle of poverty and address the trauma caused by homelessness, Simpson provides services specifically for children and youth as part of the larger Family Housing program. We provide early childhood home visits to support the healthy development of children (birth to age 5) and their families, along with education support to address the learning needs of school-age children (navigating school systems, supporting reading and literacy, and technology assistance).

# ART 4 SHELTER



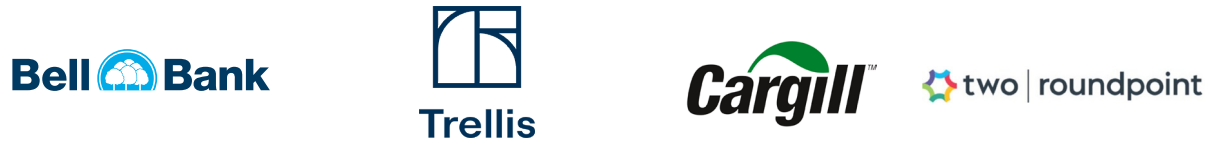
15<sup>TH</sup> ANNUAL ART 4 SHELTER | MAY 1, 2025

**\$235,000 raised**  
for Simpson's  
extended-stay shelter  
and supportive  
housing programs

**630** artists donated  
**2,411** pieces of  
original artwork  
contributed

**Over \$1.6 million**  
raised since the  
inception of Art 4  
Shelter in 2011

# THANK YOU TO OUR ART 4 SHELTER SPONSORS!



40  
YEARS

We Remember  
and Honor  
**266 INDIVIDUALS**  
Who Passed Away  
in 2024

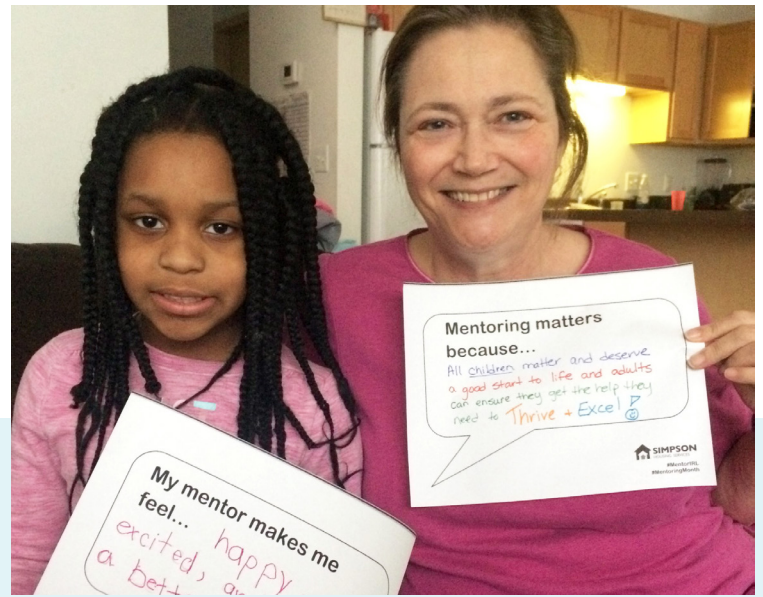
## 40TH ANNIVERSARY HOMELESS MEMORIAL MARCH & SERVICE

For 40 years, hundreds of community members have come together for the Homeless Memorial March and Service to remember people who have died while homeless.

Over the past 40 years the memorial service has recognized and remembered **4,171** individuals who have passed away while experiencing homelessness.

The Homeless Memorial March brought together hundreds of community members to remember 119 people who have died while homeless, 124 individuals who were previously homeless, and 23 advocates who passed away in 2024.





## THANK YOU FOR YOUR SUPPORT

This year,  
**1400 volunteers**  
gave **10,477**  
**hours** to Simpson.

**The value of an hour**  
**of volunteer time in**  
**Minnesota is \$36.31,**  
according to The  
Independent Sector.

The community  
contributed  
**\$363,124**  
worth of in-kind  
support.



# FINANCIALS

## Fiscal Year Ending June 30, 2025

### CURRENT ASSETS

Cash & Cash Equivalents	\$1,110,748
Restricted Cash - Other	12,357,446
Restricted Cash - Escrow & Reserves	986,258
Accounts Receivable	133,680
Contributions Receivable, Current Portion	175,500
Grants Receivable	3,912,156
Prepaid Expenses	269,073
<b>Total Current Assets</b>	<b>18,994,861</b>

### OTHER ASSETS

Cash, Tenant Security Deposits	23,248
Investments	1,085,306
Contributions Receivable, Less Current Portion	-
Right of Use Asset, Net	-
Property and Equipment, Net	22,207,635
Loan Receivable	18,407,900
<b>Total Assets</b>	<b>60,668,950</b>

### LIABILITIES

Current Portion of Long-Term Debt	9,280,733
Accounts Payable - Trade	127,860
Accounts Payable - Construction	1,358,349
Accrued Expenses	466,270
Lease Liability	-
Agency Liability	112,815
<b>Total Current Liabilities</b>	<b>11,346,027</b>

Tenant Security Deposits	19,060
Long-Term Debt, Less Current Portion, Net	29,607,052
Finance Fee, Net	(338,488)
<b>Total Liabilities</b>	<b>40,633,651</b>

### NET ASSETS

Without Donor Restrictions	
Undesignated	7,246,167
Designated by Board for Endowment	239,970
Total Net Assets Without Donor Restrictions	7,486,137
Net Assets with Donor Restrictions	12,549,162
<b>Total Net Assets</b>	<b>20,035,299</b>
<b>Total Liabilities &amp; Net Assets</b>	<b>\$60,668,950</b>

### REVENUES & SUPPORT

Contributions	\$3,538,486
Net Assets Released From Restrictions	-
In-Kind Contributions	399,299
Government Grants	16,830,311
Program Service Fees	1,215,024
Rental Revenues	
Residential Rents	23,410
Housing Assistance Payments	239,512
Special Events - Contributions & Earned Income	238,515
Special Events - Direct Benefits to Donors	(125,088)
Net Special Events Revenue	238,515
Miscellaneous Income	305,796
Net Investment Return (Loss)	67,580
<b>Total Revenues &amp; Support</b>	<b>22,857,933</b>

### EXPENSES

<b>Program Services</b>	
Shelter	2,527,637
Family Housing	4,863,131
Single Services	4,284,247
Advocacy	24,161
<b>Total Program Services</b>	<b>11,699,176</b>
Management & General	1,722,410
Fundraising	599,304
<b>Total Expenses</b>	<b>14,020,890</b>

Change in Net Assets	8,711,955
<b>Net Assets - Beginning of Year</b>	<b>11,323,344</b>
<b>Net Assets - End of Year</b>	<b>20,035,299</b>

The financials are significantly impacted by the construction in progress of Simpson Community Shelter & Apartments.

# FINANCIALS

## Fiscal Year Ending June 30, 2024

### CURRENT ASSETS

Cash & Cash Equivalents	\$1,270,172
Restricted Cash - Other	21,096,827
Restricted Cash - Escrow & Reserves	1,633,369
Accounts Receivable	151,324
Contributions Receivable, Current Portion	77,666
Grants Receivable	2,978,766
Prepaid Expenses	275,953
<b>Total Current Assets</b>	<b>27,484,077</b>

### OTHER ASSETS

Cash, Tenant Security Deposits	19,941
Investments	1,067,726
Contributions Receivable, Less Current Portion	-
Right of Use Asset, Net	-
Property and Equipment, Net	12,456,101
Loan Receivable	18,407,900
<b>Total Assets</b>	<b>59,435,745</b>

### LIABILITIES

Current Portion of Long-Term Debt	8,816,681
Accounts Payable - Trade	72,994
Accounts Payable - Construction	758,673
Accrued Expenses	399,671
Lease Liability	-
Agency Liability	114,602
<b>Total Current Liabilities</b>	<b>10,162,621</b>

Tenant Security Deposits	19,617
Long-Term Debt, Less Current Portion, Net	38,327,982
Finance Fee, Net	(397,819)
<b>Total Liabilities</b>	<b>48,112,401</b>

### NET ASSETS

Without Donor Restrictions	
Undesignated	7,055,942
Designated by Board for Endowment	213,470
Total Net Assets Without Donor Restrictions	7,269,412
Net Assets with Donor Restrictions	4,053,932
<b>Total Net Assets</b>	<b>11,323,344</b>
<b>Total Liabilities &amp; Net Assets</b>	<b>\$59,435,745</b>

### REVENUES & SUPPORT

Contributions	\$2,307,904
Net Assets Released From Restrictions	-
In-Kind Contributions	555,440
Government Grants	10,204,530
Program Service Fees	1,043,633
Rental Revenues	
Residential Rents	30,095
Housing Assistance Payments	180,472
Special Events - Contributions & Earned Income	263,403
Special Events - Direct Benefits to Donors	(184,341)
Net Special Events Revenue	79,062
Miscellaneous Income	91,552
Net Investment Return (Loss)	152,198
<b>Total Revenues &amp; Support</b>	<b>14,644,886</b>

### EXPENSES

<b>Program Services</b>	
Shelter	2,101,972
Family Housing	4,720,581
Single Services	3,467,963
Advocacy	35,920
<b>Total Program Services</b>	<b>10,326,436</b>

Management & General	1,455,437
Fundraising	657,619
<b>Total Expenses</b>	<b>12,439,492</b>

Change in Net Assets	2,205,394
----------------------	-----------

<b>Net Assets - Beginning of Year</b>	<b>9,117,950</b>
<b>Net Assets - End of Year</b>	<b>\$11,323,344</b>

*The financials are significantly impacted by the construction in progress of Simpson Community Shelter & Apartments.*

# FINANCIALS

## Fiscal Year Ending June 30, 2023

### CURRENT ASSETS

Cash & Cash Equivalents	\$1,726,607
Restricted Cash - Other	101,057
Restricted Cash - Escrows	79,932
Accounts Receivable	100,978
Contributions Receivable, Current Portion	243,500
Grants Receivable	414,388
Prepaid Expenses	338,937
<b>Total Current Assets</b>	<b>3,005,399</b>

### OTHER ASSETS

Cash - Tenant Security Deposits	17,993
Investments	3,411,528
Certificates of Deposit - Cost	-
Contributions Receivable, Less Current Portion	14,667
Right of Use Asset, Net	22,268
Property and Equipment, Net	8,824,654
<b>Total Assets</b>	<b>15,296,509</b>

### CURRENT LIABILITIES

Current Portion of Long-Term Debt	1,039,666
Accounts Payable - Trade	97,492
Accounts Payable - Construction	40,678
Accrued Expenses	385,078
Lease Liability	22,268
Agency Liability	74,961
<b>Total Current Liabilities</b>	<b>1,660,143</b>

Tenant Security Deposits	15,752
Long-Term Debt, Less Current Portion, Net	4,502,664
<b>Total Liabilities</b>	<b>6,178,559</b>

### NET ASSETS

Without Donor Restrictions	
Undesignated	6,849,595
Designated by Board for Endowment	190,330
Total Net Assets w/out Donor Restrictions	7,039,925
With Donor Restrictions	2,078,025
<b>Total Net Assets</b>	<b>9,117,950</b>
<b>Total Liabilities and Net Assets</b>	<b>15,296,509</b>

### REVENUES & SUPPORT

Contributions	\$3,381,013
Net Assets Released from Restrictions	
In-kind contributions	387,035
Government grants	6,300,164
Program Service Fees	660,632
Rental Revenues	
Resident Rents	35,440
Housing Assistance Payments	180,594
Special Events - Contributions and Earned Income	175,354
Special Events - Direct Benefits to Donors	(106,071)
Net Special Events Revenue	69,283
Miscellaneous Income	185,666
Net Investment Return (Loss)	66,684
<b>Total Revenues &amp; Support</b>	<b>11,266,511</b>

### EXPENSES

#### Program Services

Shelter	1,960,687
Family Housing	4,103,778
Single Services	2,846,888
Advocacy	45,265
<b>Total Program Services</b>	<b>8,956,618</b>

Management and General	1,581,489
Fundraising	640,057
<b>Total Expenses</b>	<b>11,178,164</b>

Change in Net Assets	88,347
----------------------	--------

<b>Net Assets, Beginning of Year</b>	<b>\$9,029,603</b>
<b>Net Assets - End of Year</b>	<b>\$9,117,950</b>

The financials are significantly impacted by the construction in progress of Simpson Community Shelter & Apartments.

# ABOUT SIMPSON

Simpson Housing Services began as an emergency overnight shelter at Simpson United Methodist Church in 1982. For four decades, we have been a leading nonprofit helping people experiencing homelessness. In response to unmet community needs, our key programs have grown to include the following: extended-stay shelter; supportive housing programs for youth, single adults, and families; and developmental and educational services for children.

We were one of the first Minnesota organizations to use the nationally recognized Housing First model. Individuals and families are placed into housing immediately and then supported with identified services to help address barriers. We work across the metro area, partnering with property owners and developers to connect families and individuals to affordable, sustainable housing. The majority of our program participants live in scattered-site housing or individual apartments in market-rate apartment buildings, with the largest number of participants living in Hennepin County.

## **MISSION**

To house, support, and advocate for people experiencing homelessness.

## **VALUES**

We believe that everybody has the right to safe and affordable housing.

We celebrate and embrace the uniqueness and dignity of every person.

We encourage people to draw upon their strengths and promote the power of self-advocacy.

We advocate against the injustices of society that cause homelessness and poverty.

We strive to create a collaborative community with the individuals we serve, within Simpson, and with the greater community.



Visit Us at [simpsonhousing.org](https://www.simpsonhousing.org)

160 Glenwood Avenue

Minneapolis, MN 55405